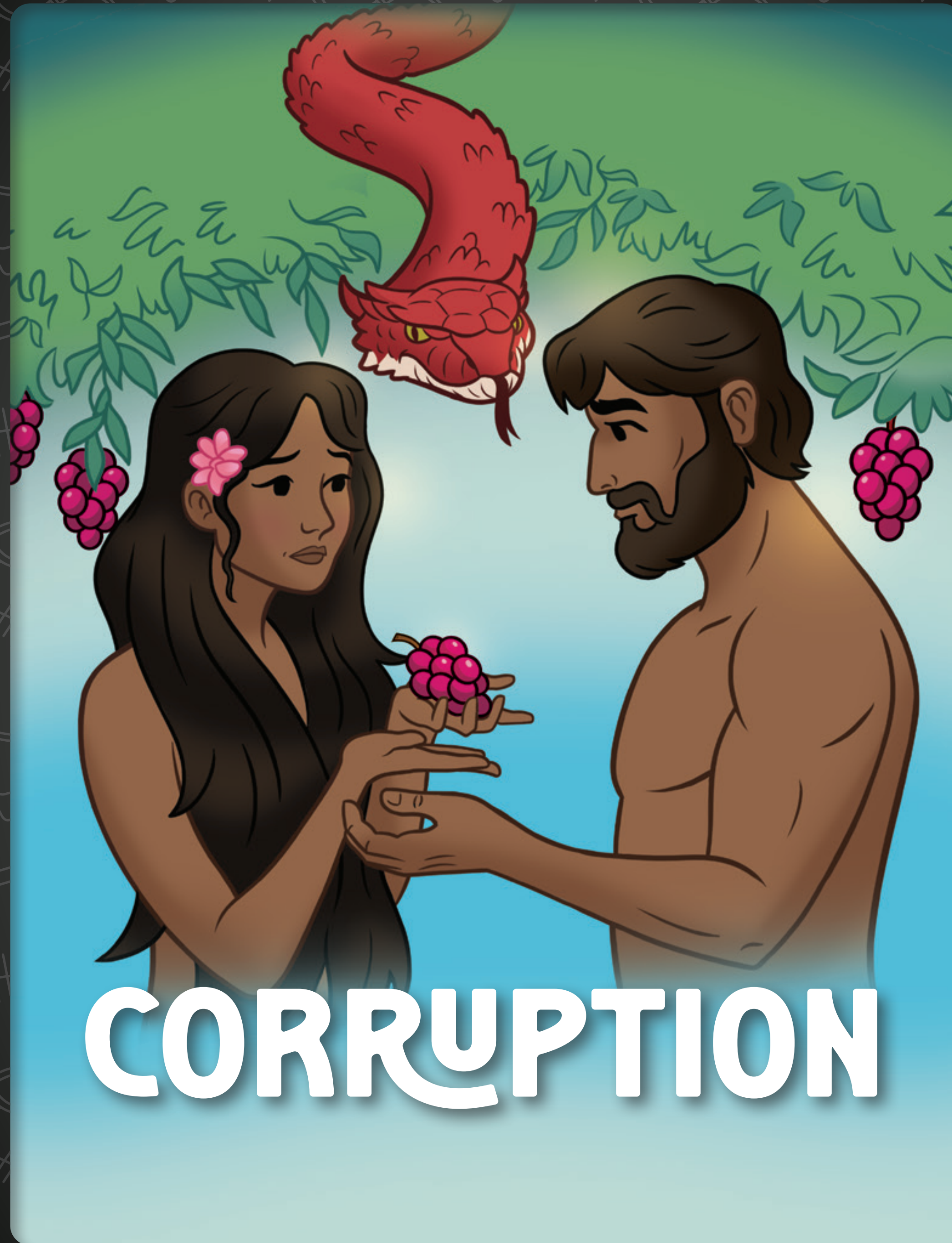


# CREATION

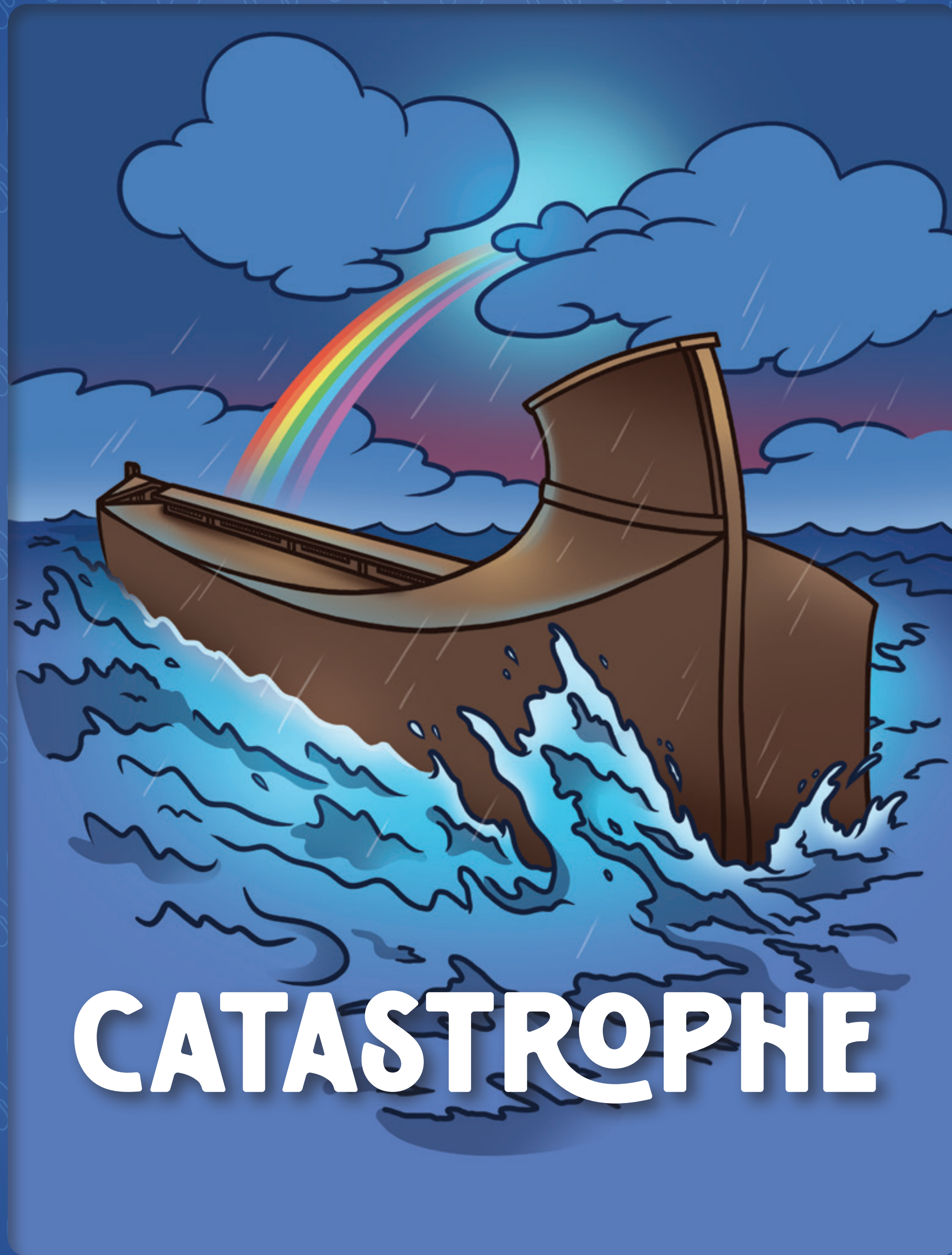
THE GREAT  
*Jungle*  
JOURNEY  
AnswersVBS





THE GREAT  
*Jungle*  
JOURNEY  
AnswersVBS

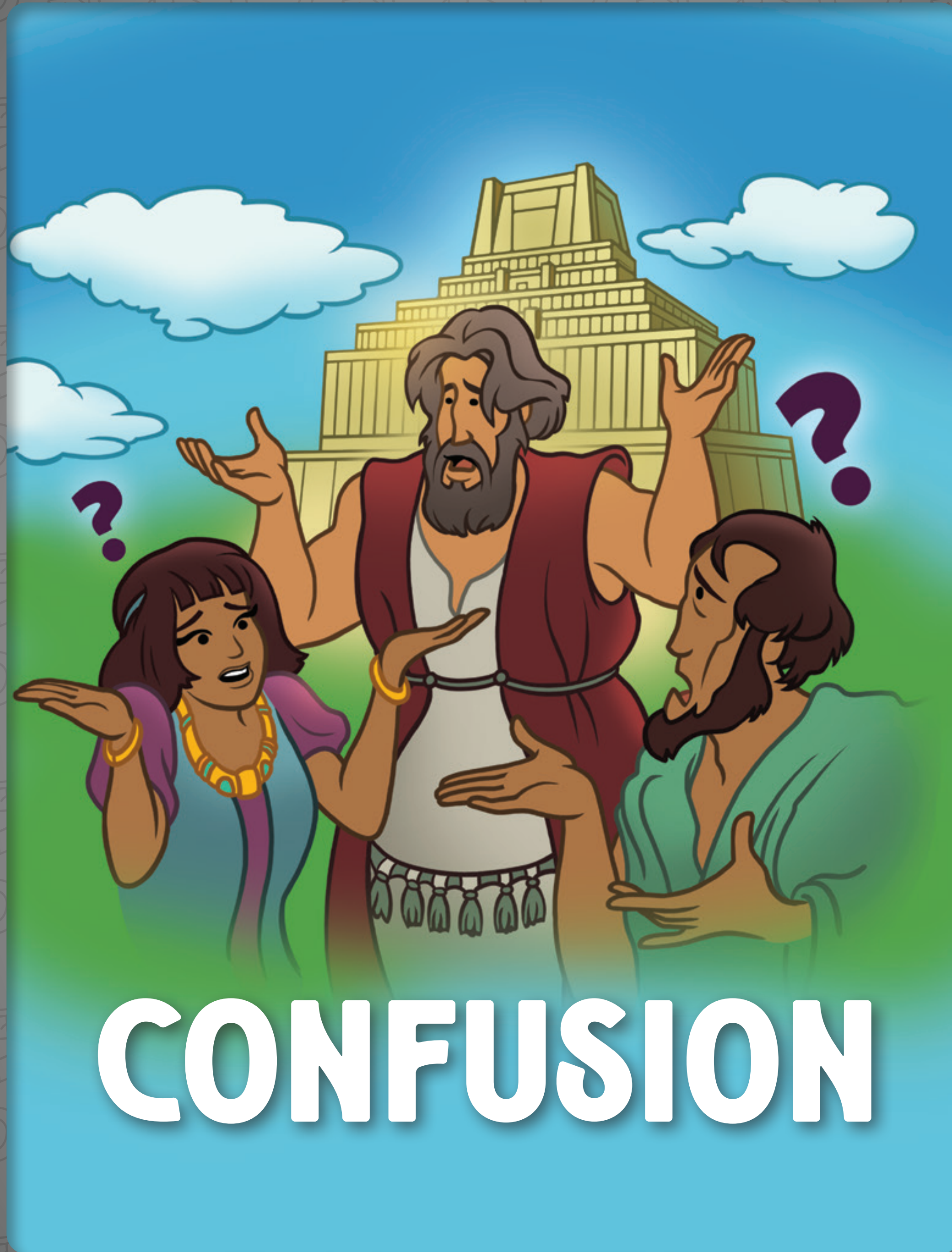




# CATASTROPHE

THE GREAT  
*Jungle*  
**JOURNEY**  
AnswersVBS

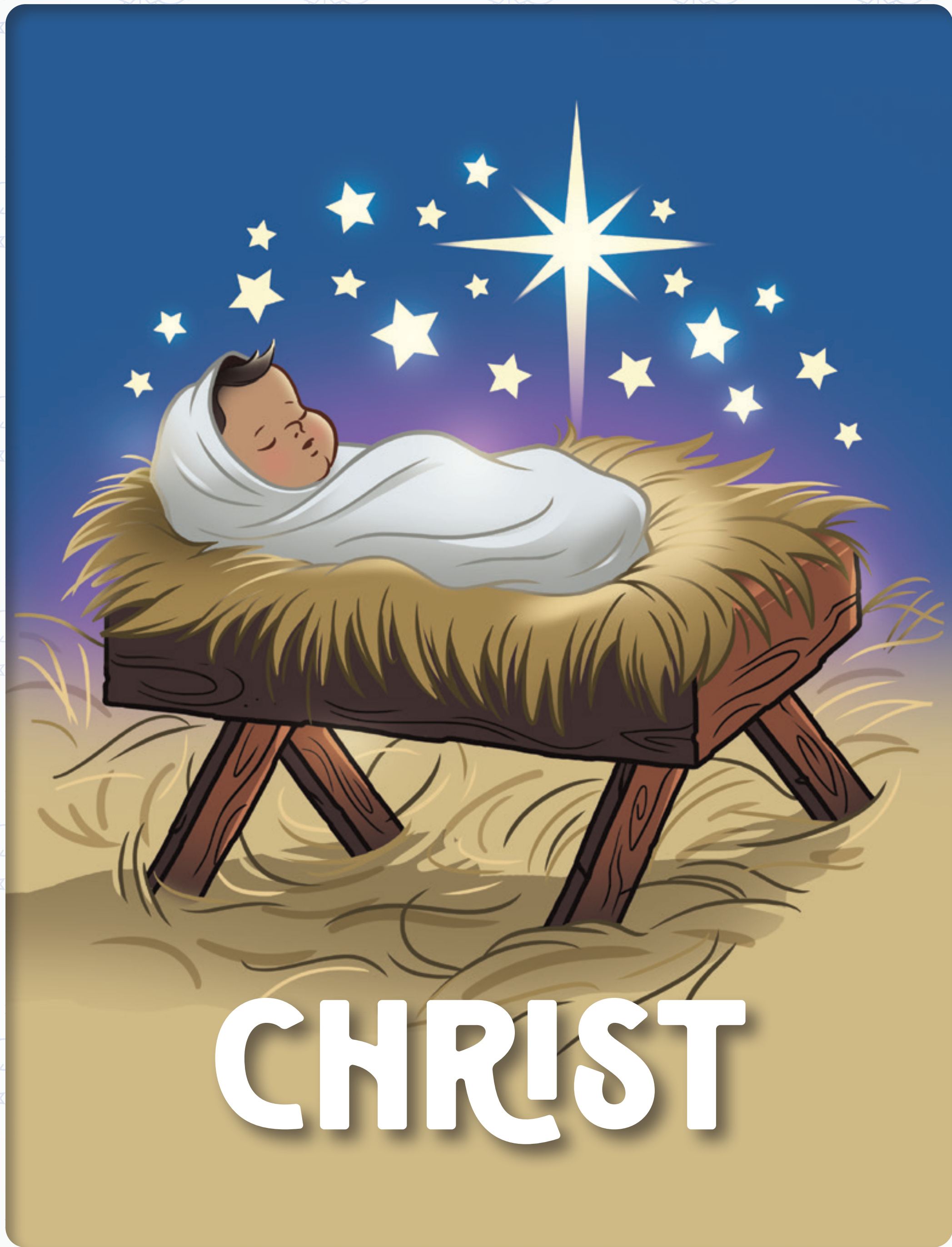




# CONFUSION

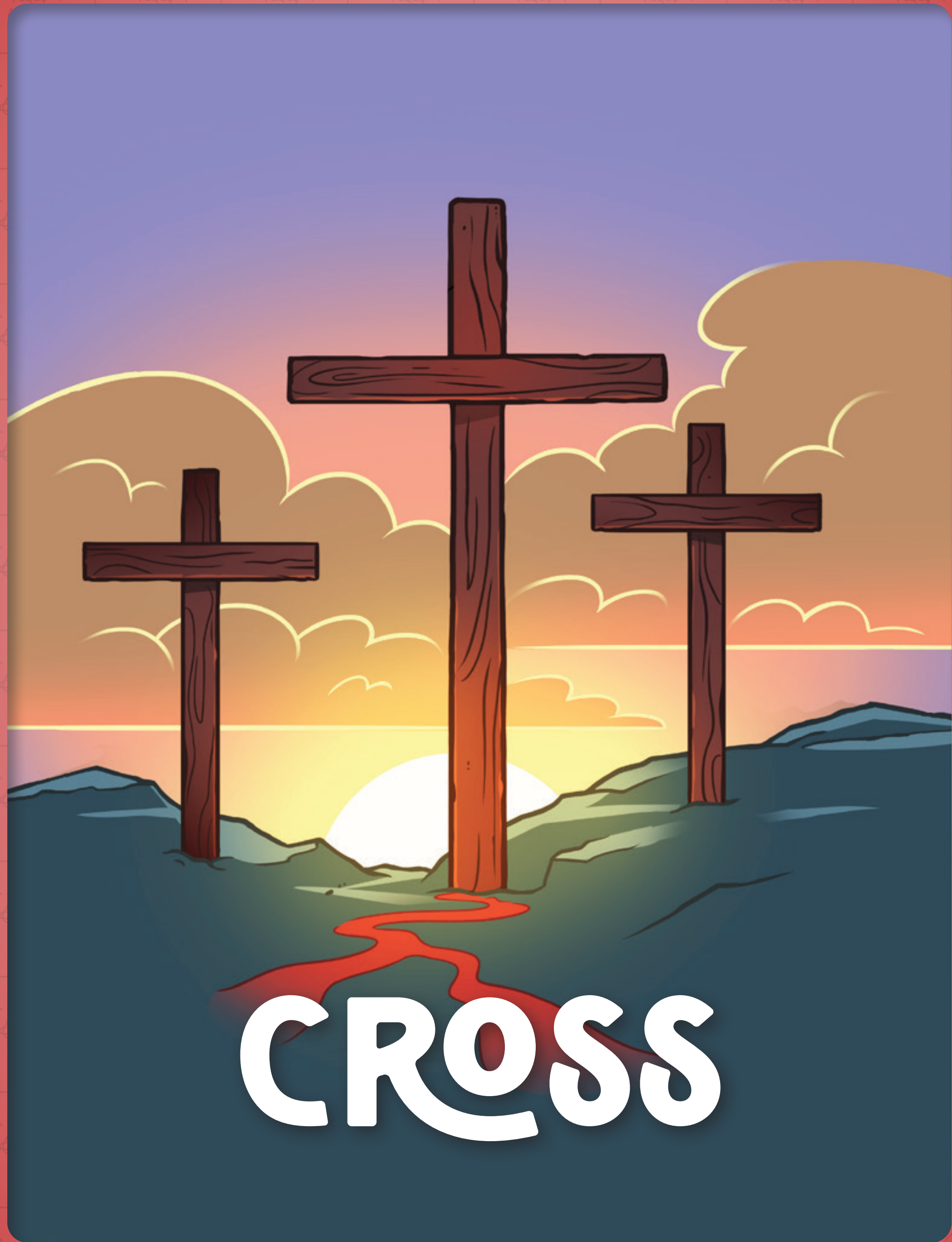
THE GREAT  
*Jungle*  
JOURNEY  
AnswersVBS





THE GREAT  
**Jungle**  
**JOURNEY**  
AnswersVBS









# CONSUMMATION

THE GREAT  
**Jungle**  
**JOURNEY**  
AnswersVBS

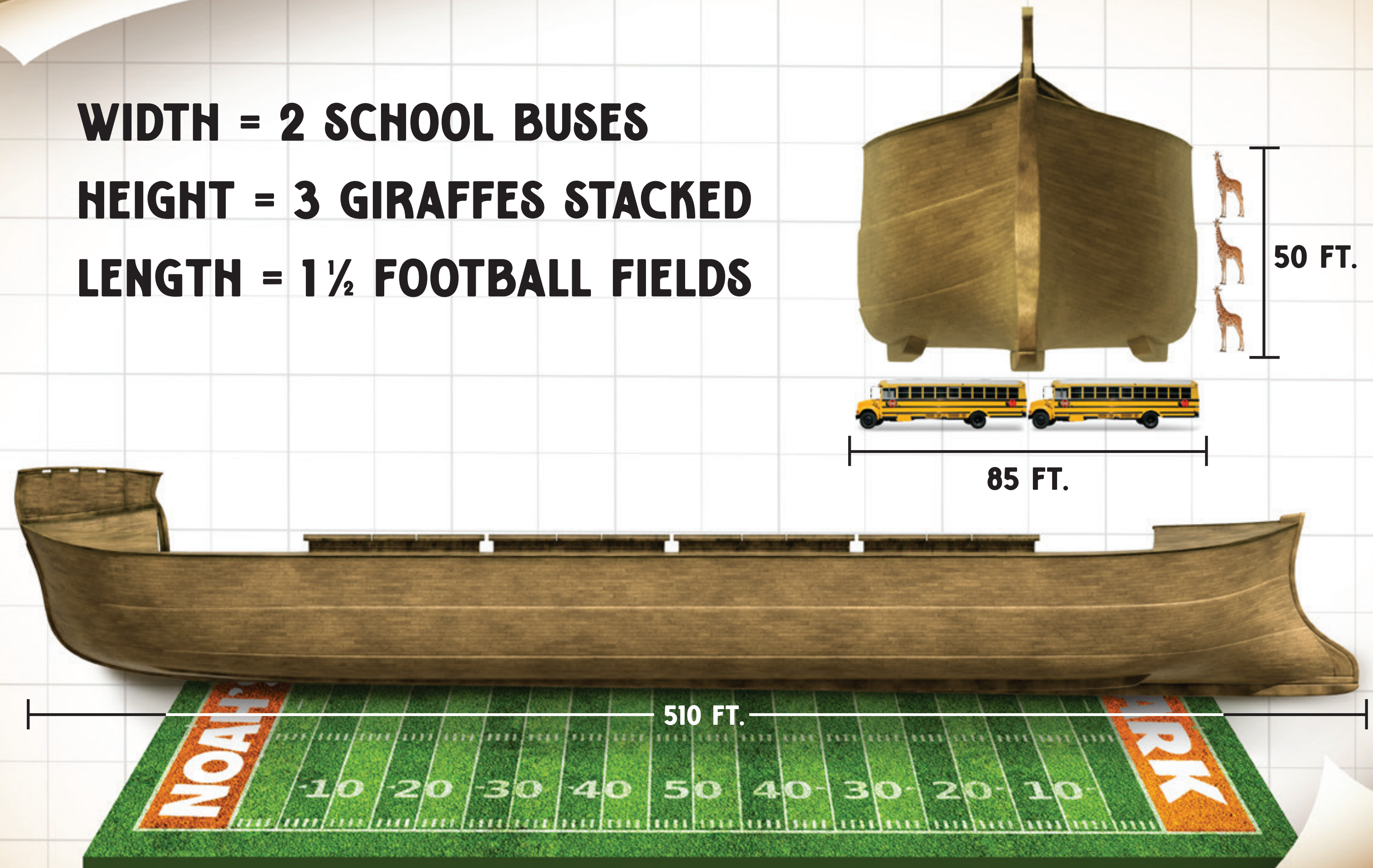


# LEAF DRIP TIP

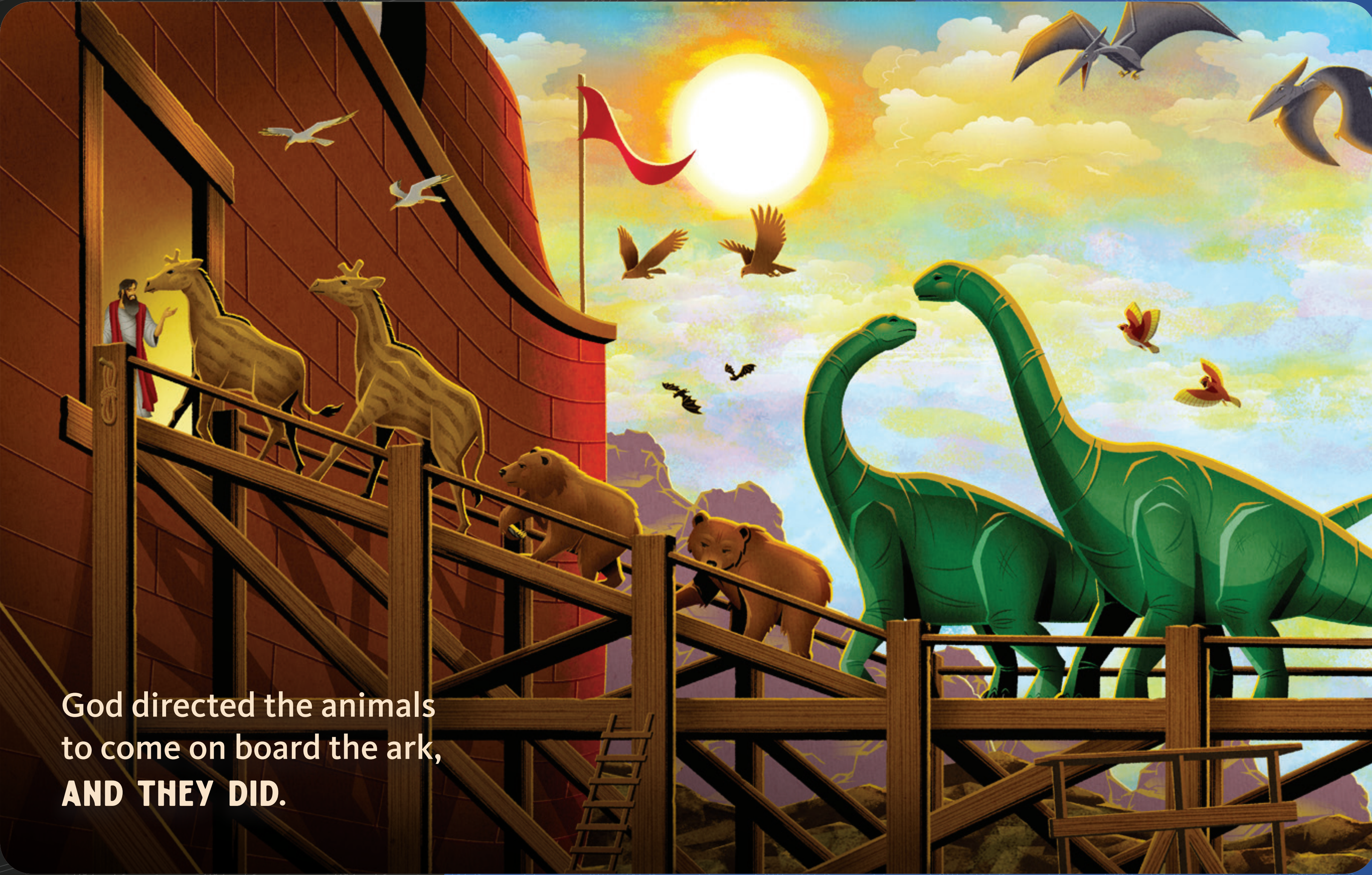




**WIDTH = 2 SCHOOL BUSES**  
**HEIGHT = 3 GIRAFFES STACKED**  
**LENGTH = 1½ FOOTBALL FIELDS**







God directed the animals  
to come on board the ark,  
**AND THEY DID.**



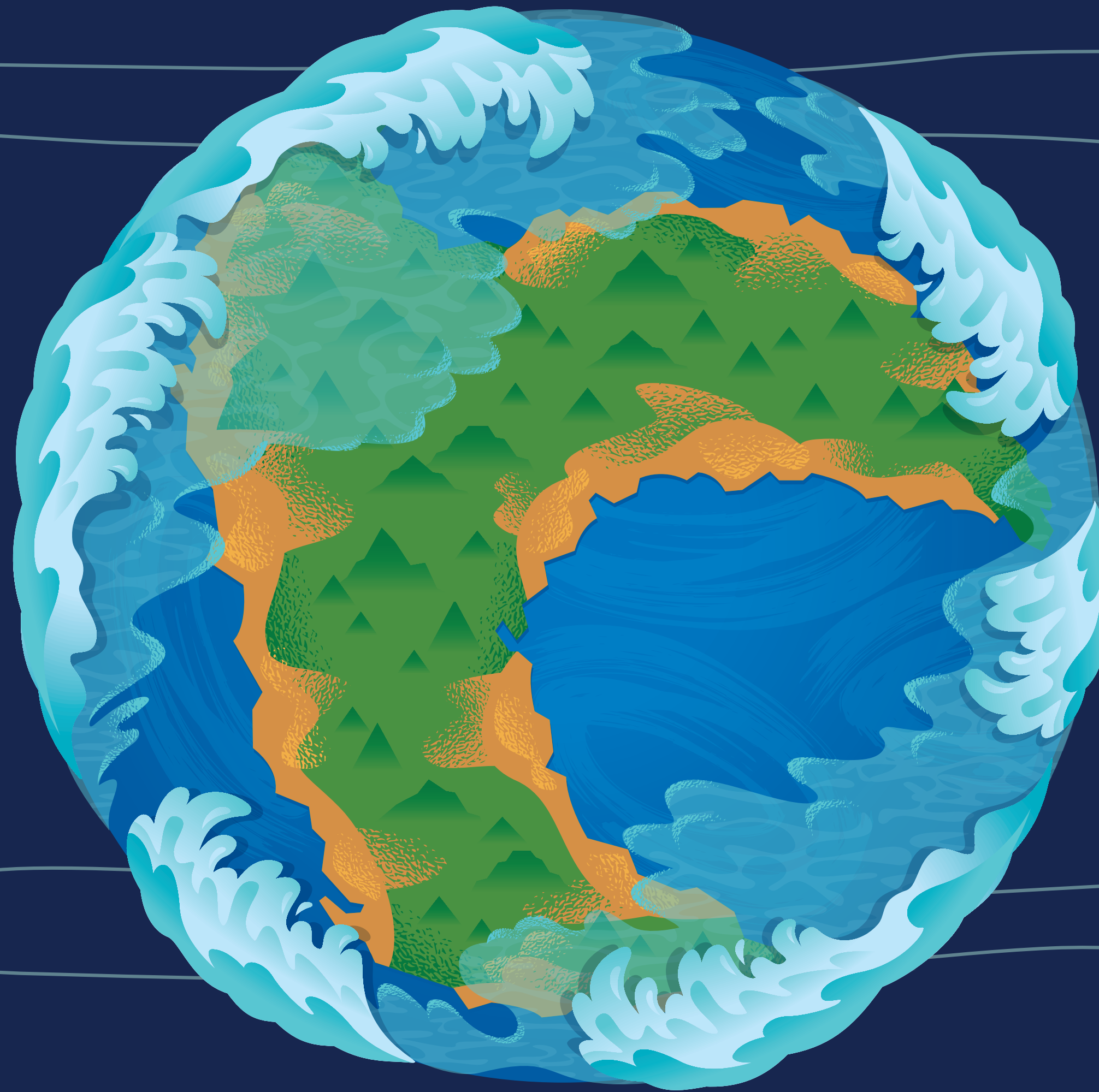
**YOUNG DINOSAURS WOULD  
HAVE EASILY FIT ON THE ARK.**

Poor Big Joe  
obviously didn't  
get the memo.  
Kids only!



Could water rise over the mountains, as the Bible says it does, and not over the rest of the area? No!

**IT HAD TO BE  
A GLOBAL FLOOD.**







God promised he would never send  
another global flood, and he hasn't.  
**GOD ALWAYS KEEPS  
HIS PROMISES!**



You must ADMIT you are a sinner.

ADMIT



BELIEVE in Jesus Christ.

BELIEVE





RECEIVE him as your Savior.

FOREVER  
RECEIVE





**CREATION**



**CORRUPTION**



**CATASTROPHE**



**CONFUSION**



**CHRIST**



**CROSS**



**CONSUMMATION**



