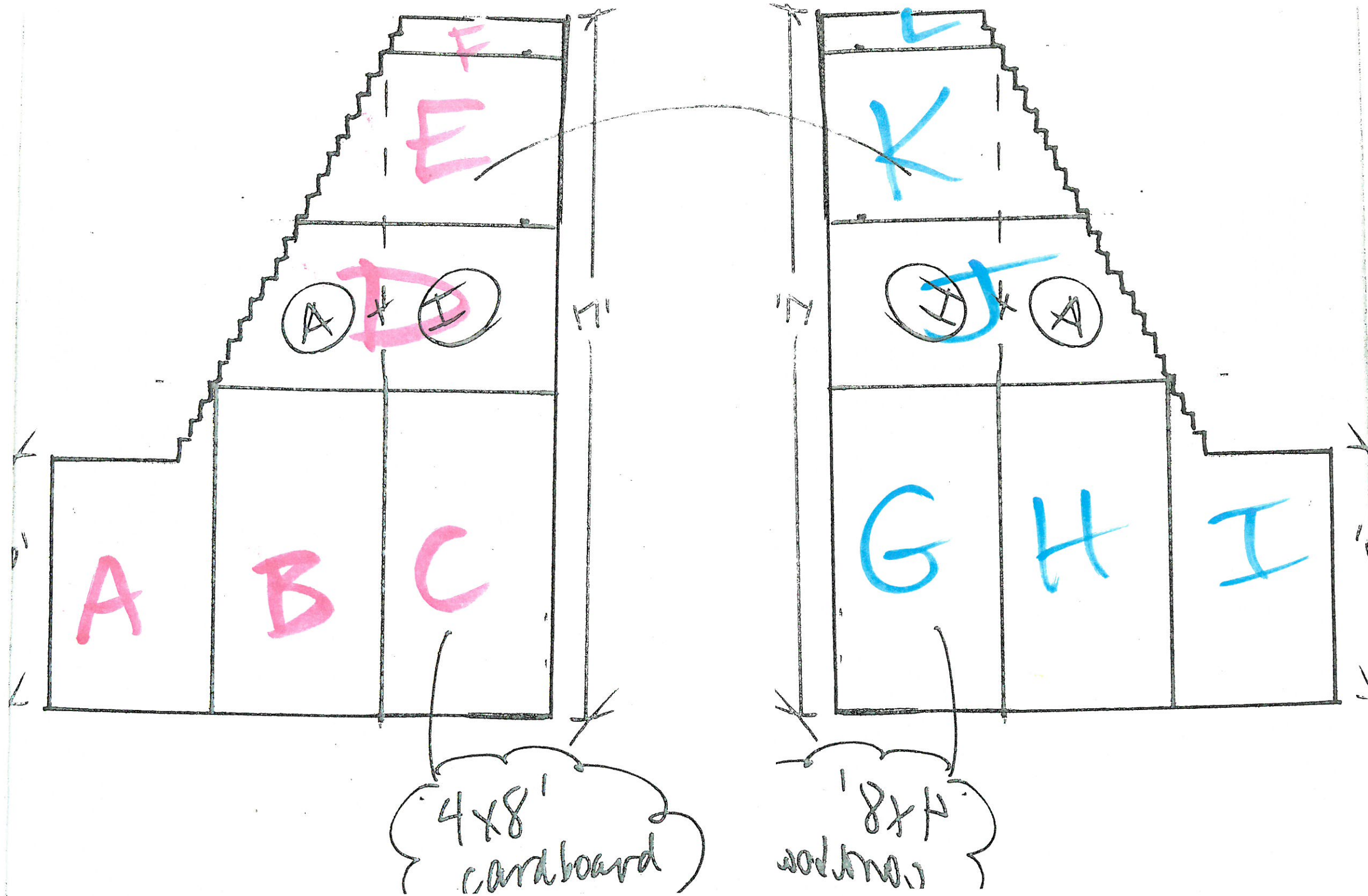


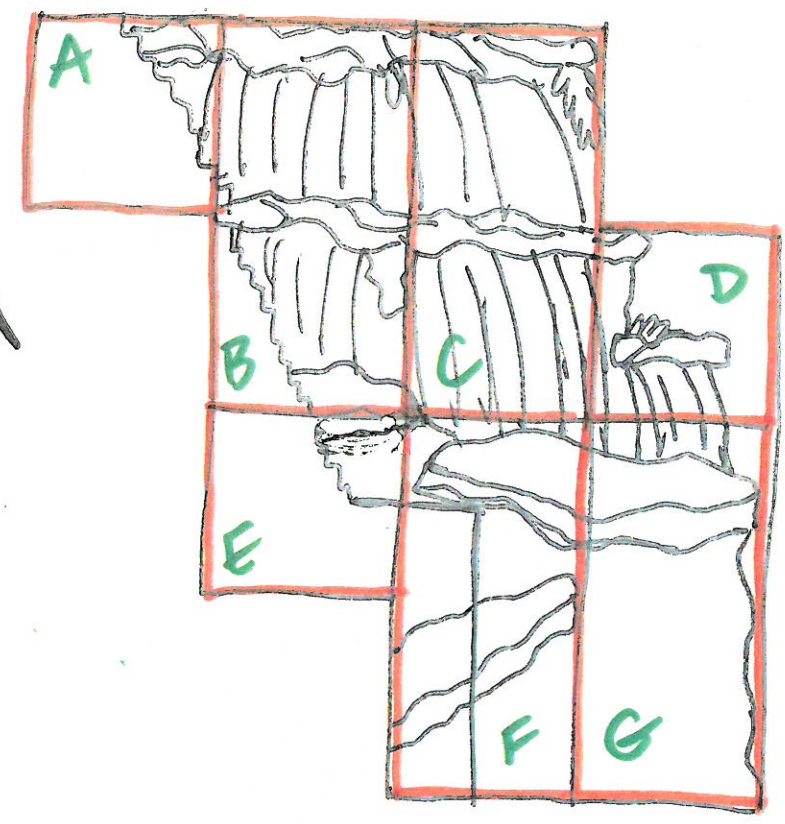
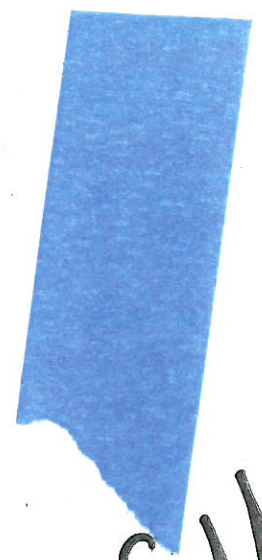
VBS 2018
INCREDIBLE RACE

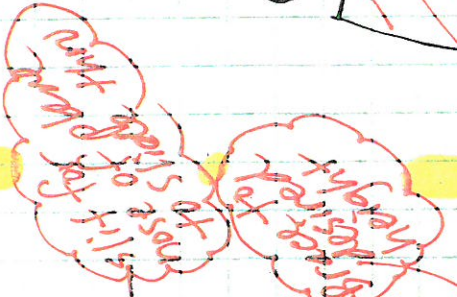
CONSTRUCTION
PIECES
ASSEMBLY HELPS

NORTHWEST BIBLE CHURCH
• ANSWERS VBS



Waterfall





Stilix hat mich
ganz schön
geirritet

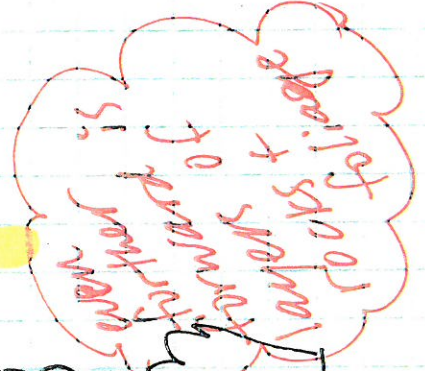
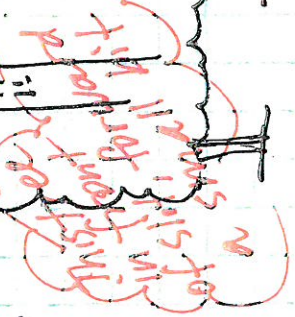


Leaves
in the
wind
fly



Shall we
ask
him
to
send
a
color
photo
of
you
to
mom
+
dad

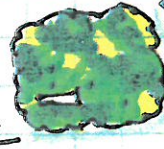
will
need
to work
all the
details
out
you
can



even is
to work
+ 20%
of 20%



trees layered with a little space behind

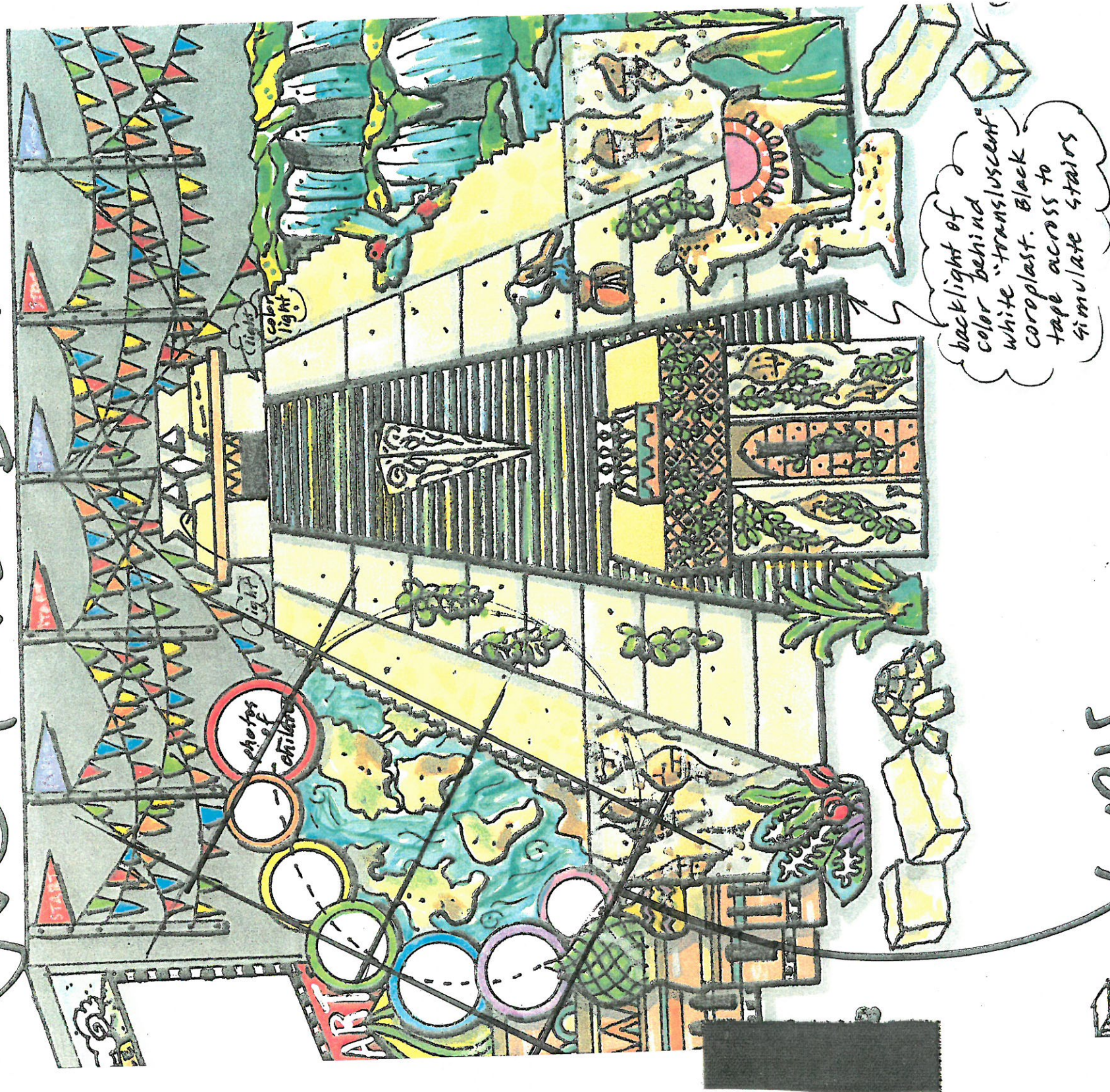


so you can
navigate that
plane nose thru
when it's time

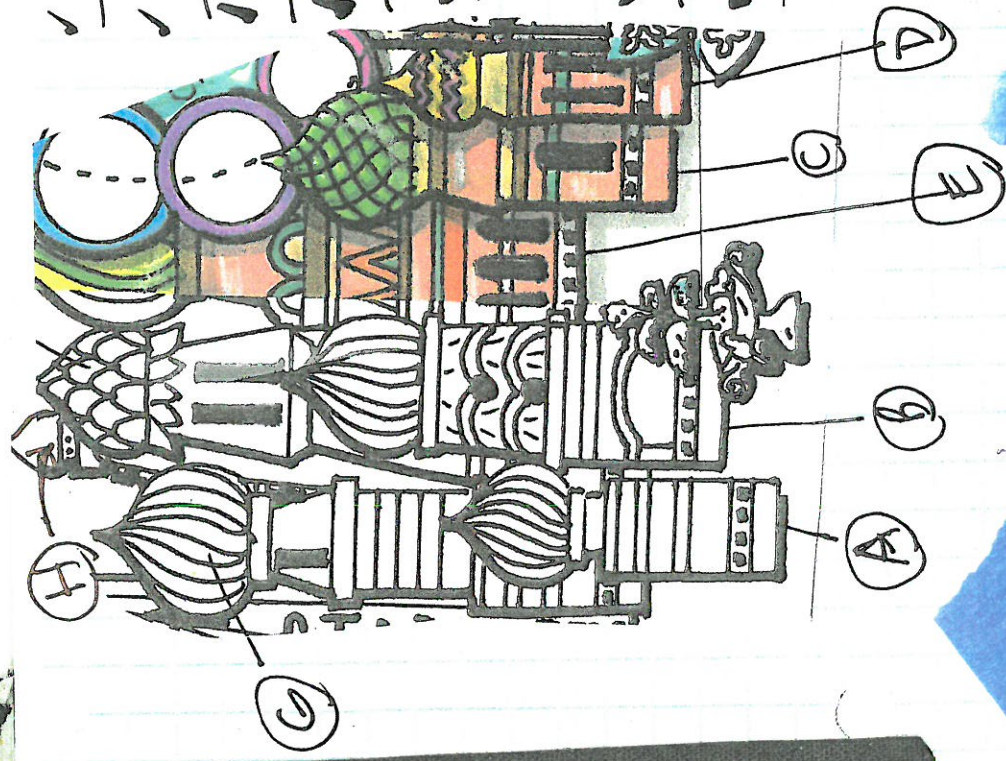
twisted
(spokes)
to come
to be
in +
rescue to
fills +
fills +
cover +
bases +
other +
cities +
that +

1. What is the purpose of the project?
 2. Why is it important?
 3. How will it be done?
 4. Who will be involved?
 5. When will it be completed?
 6. Where will it be done?
 7. What are the risks?
 8. How will the risks be managed?
 9. What are the expected outcomes?
 10. How will the outcomes be measured?

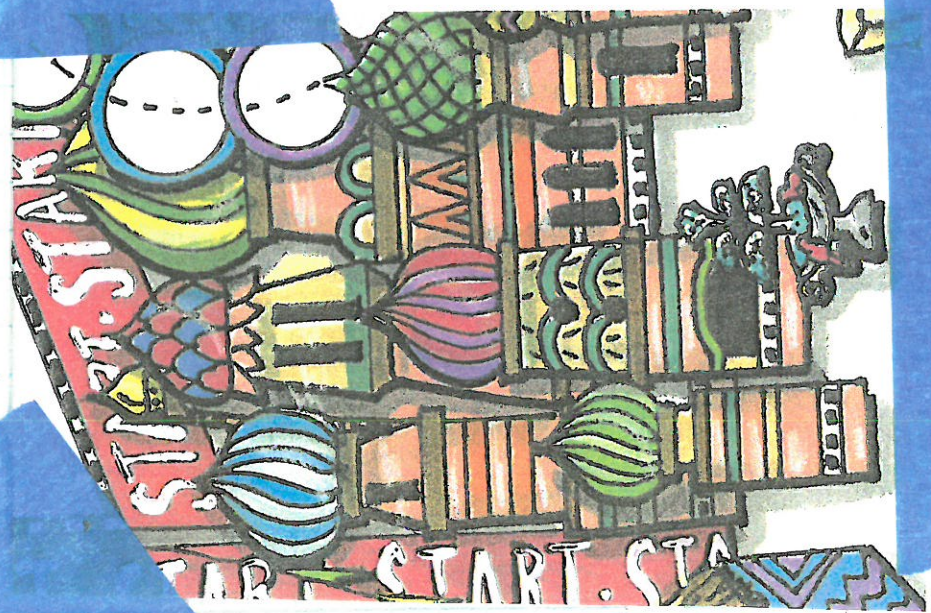
WORLD



5.8x9



body	top	body + top
A x1		x1 4x8
B x1	x1	
C		x1
D		x1
E x1	x1	
F x1	x1	
G x1	x1	
H x2		



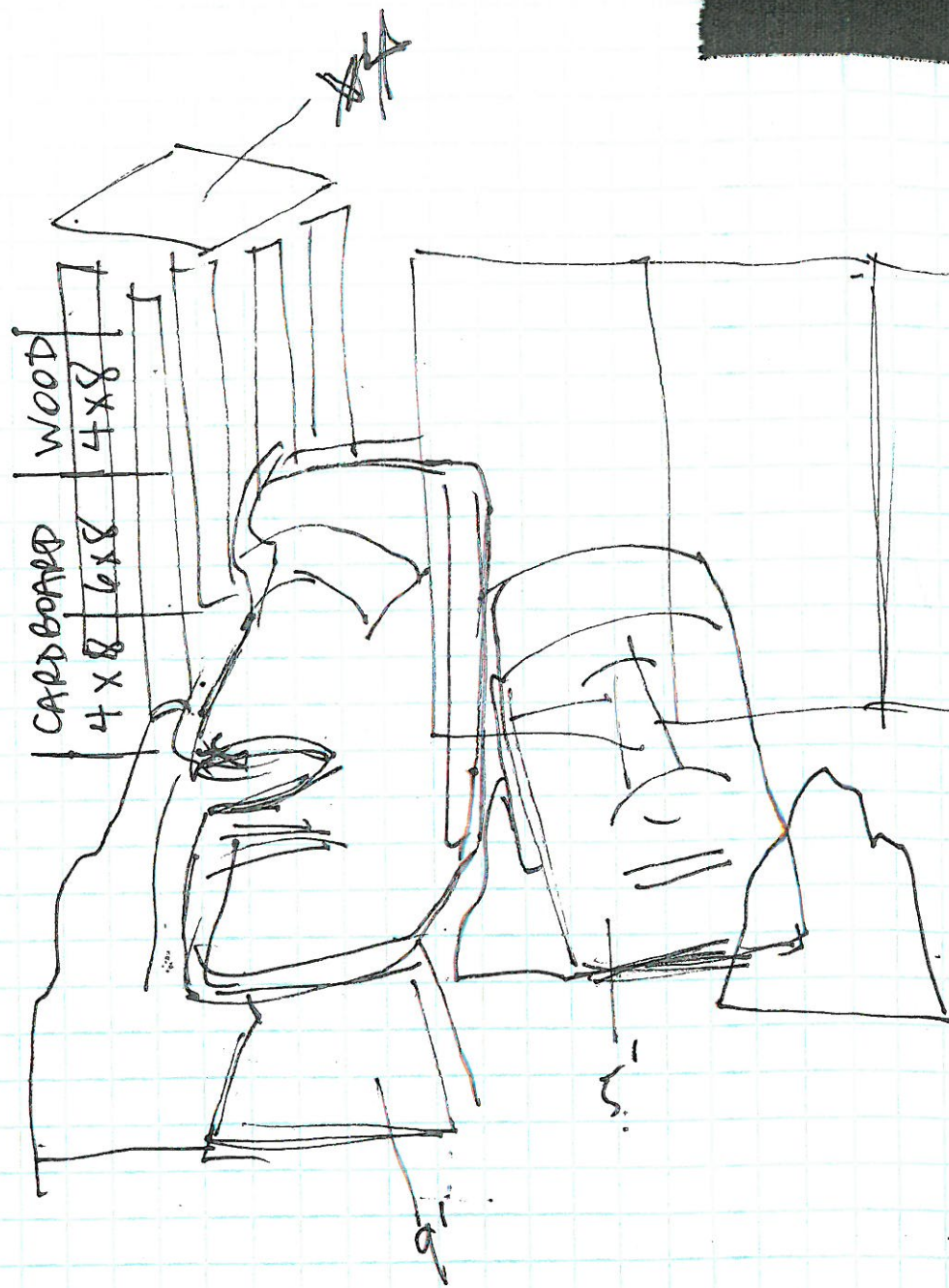
CHRIS

charisma
base

Sanctuary
Entry



$$3/8^u = 1'$$



Double
Doors
Entry
Zone

